

CABLE BUNDLE THROUGH "UNIQUE FIRESTOP SLEEVE" GYPSUM WALL ASSEMBLY

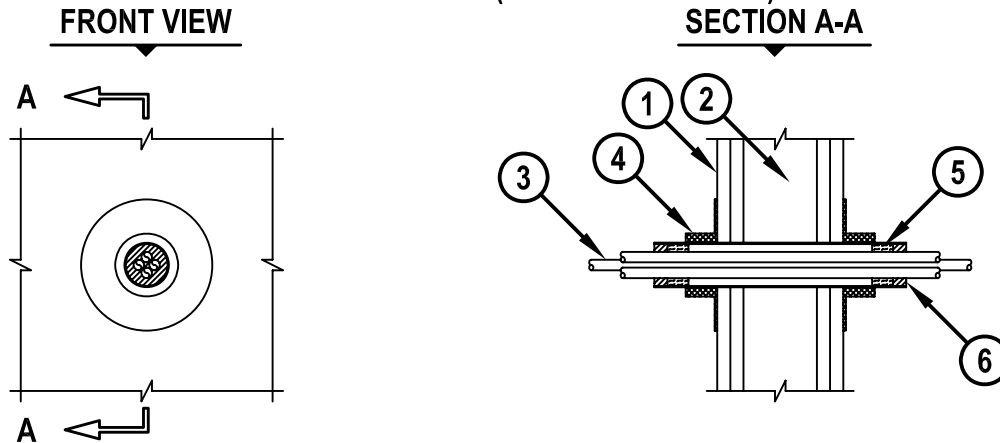
F-RATING = 1-HR. OR 2-HR.

T-RATING = 0-HR.

L-RATING AT AMBIENT = (SEE TABLE BELOW)

L-RATING AT 400°F = (SEE TABLE BELOW)

WL3122d.041806



1. GYPSUM WALL ASSEMBLY (UL/cUL CLASSIFIED U300 OR U400 SERIES WALL) (1-HR. OR 2-HR. FIRE-RATING) (2-HR. SHOWN).
2. [NOT SHOWN] WOOD STUDS TO CONSIST OF NOMINAL 2" x 4" LUMBER. STEEL STUDS TO BE MINIMUM 2-1/2" WIDE.
3. CABLE BUNDLE TO CONSIST OF ANY OF THE FOLLOWING :
 - A. MAXIMUM 300 KCMIL SINGLE CONDUCTOR POWER CABLE WITH PVC JACKET.
 - B. MAXIMUM 4 PAIR NO. 24 AWG TELEPHONE CABLE WITH PVC JACKET.
 - C. MAXIMUM 3/C NO. 12 AWG CABLE WITH PVC JACKET.
4. UNIQUE FIRESTOP PRODUCTS, DIVISION OF "IT'S UNIQUE" INC. SMOOTH SLEEVE, THREADED SLEEVE, OR SPLIT SLEEVE (1", 2", AND 4" SIZES).
5. [OPTIONAL] MINIMUM 1" THICKNESS MINERAL WOOL (MINIMUM 4 PCF DENSITY) TIGHTLY PACKED AND RECESSED TO ACCOMMODATE FIRESTOP PUTTY.
6. MINIMUM 5/8" THICKNESS HILTI CP 618 FIRESTOP PUTTY STICK.

FIRESTOP DEVICE	L-RATING, CFM/SQ FT (CFM/FIRESTOP DEVICE)	
	AMBIENT	400°F
SMOOTH SLEEVE	22 (2)	18 (2)
THREADED SLEEVE	22 (2)	18 (2)
SPLIT SLEEVE	54 (5)	47 (4)

NOTES : 1. MAXIMUM DIAMETER OF OPENING IN WALL FOR 1", 2", AND 4" SIZES ARE 1-1/8", 2-1/4", AND 4-1/2", RESPECTIVELY.
 2. CABLES TO FILL MAXIMUM 36% OF CROSS-SECTIONAL AREA OF OPENING.
 3. [NOT SHOWN] MINIMUM 1/2" BEAD HILTI FS-ONE INTUMESCENT FIRESTOP SEALANT SHALL BE APPLIED AROUND THE PERIMETER OF THE FIRESTOP DEVICE ON EACH SIDE OF GYPSUM WALL ASSEMBLY.



HILTI, Inc.
Tulsa, Oklahoma USA (918) 252-6000

Sheet	1 of 1
Scale	7/64" = 1"
Date	Apr. 18, 2006

Drawing No.
WL 3122d