



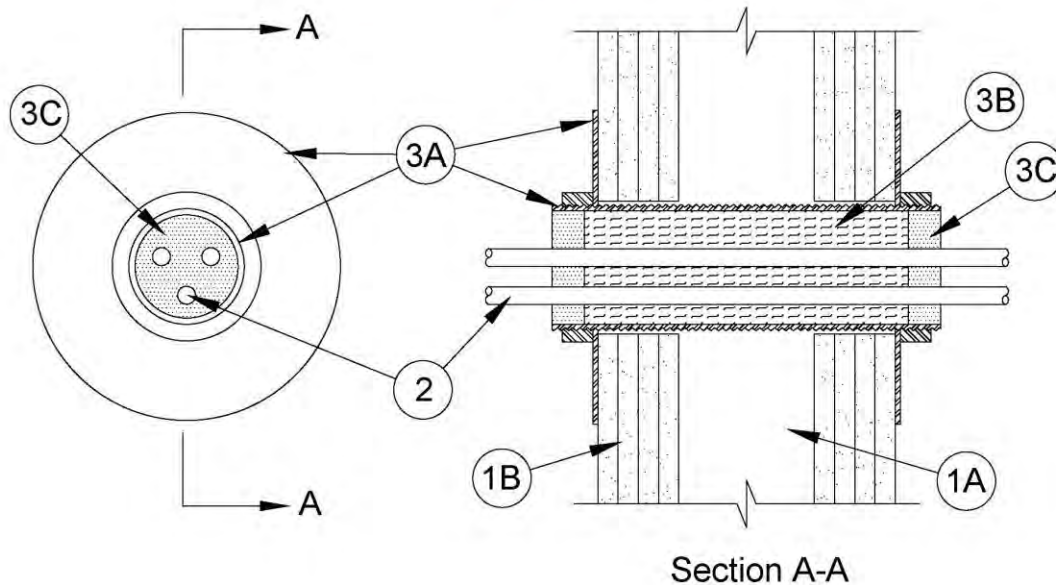
# Unique Fire Stop Products

UL XHEZ.W-L-3234  
Drywall 3 and 4 Hr. Through-Firestop System  
using Unique Fire Stop Products – Threaded Firestop / Split Sleeve

Guide XHEZ  
Through-Firestop Systems

April 25, 2006

System No. W-L-3234  
F Ratings - 3 and 4 Hr (See Item 1)  
T Rating - 0 Hr



1. **Wall Assembly** — The 3 or 4 hr fire-rated gypsum board/steel stud wall assembly shall be constructed of the materials and in the manner specified in the individual U400 or V400 Series Wall and Partition Designs in the UL Fire Resistance Directory and shall include the following construction features:

A. **Studs** — Wall framing shall consist of steel channel studs. Steel studs to be min 3-5/8 in. (92 mm) wide and spaced 24 in. (610 mm) OC.

B. **Gypsum Board\*** — Multiple layers of min 1/2 in. (13 mm) thick gypsum board. The gypsum board type, thickness, number of layers and orientation shall be as specified in the individual Wall and Partition Design.

**The hourly F Rating of the firestop system is equal to the hourly fire rating of the wall assembly in which it is installed.**

2. **Cables** — Aggregate cross-sectional area of cables in sleeve to be min 8 to max 34 percent of the cross-sectional area of the sleeve. Cables to be tightly bundled. The annular space shall be min 1/4 in. (6 mm) to max 1-1/4 in. (32 mm). Cables to be rigidly supported on both surfaces of the wall assembly. Any combination of the following types and sizes of cables may be used:

A. Max RG59/U (or smaller) coaxial cable with fluorinated ethylene insulation and jacketing.

B. Max 62.5/48 fiber optic cable with PVC insulation and jacket.

C. Max 4 pair No. 24 AWG (or smaller) copper conductor data cable with PVC insulation and jacketing.

3. **Firestop System** — The firestop system shall consist of the following:

A. **Firestop Device\*** — Threaded steel sleeve device incorporating flat washers secured by threaded couplers. Device shall be installed around cables in accordance with the accompanying installation instructions. Device provided in nom 1, 2 and 4 in. (25, 51 and 102 mm) sizes. Max diam of opening in wall for 1, 2 and 4 in. (25, 51 and 102 mm) size devices are 1-1/4, 2-7/16 and 4-1/2 in. (32, 62 and 114 mm) respectively.

**UNIQUE FIRE STOP PRODUCTS INC — Threaded Firestop**

A1. **Firestop Device\*** — (Not Shown) — As an alternate to the threaded sleeve device in Item 3A, threaded steel sleeve halves incorporating split nuts and split washers sized to fit the specific diam of the opening may be used. Device shall be installed around cables in accordance with the accompanying installation instructions. Device provided in nom 1, 2 and 4 in. (25, 51 and 102 mm) sizes. Max diam of opening in wall for 1, 2 and 4 in. (25, 51 and 102 mm) size devices are 1-1/4, 2-7/16 and 4-1/2 in. (32, 62 and 114 mm) respectively.

**UNIQUE FIRE STOP PRODUCTS INC — Split Sleeve**

B. **Packing Material** — Min 4 pcf (64 kg/m<sup>3</sup>) mineral wool batt insulation packed into opening as a permanent form throughout full length of firestop device except for recess at each end of the device to accommodate the required thickness of fill material.

C. **Fill Void or Cavity Materials\* - Putty** — Min 1 in. (25 mm) thickness of fill material applied within annulus, flush both ends of firestop device. Allowable fill materials: Hilti CP 618 Putty / Specified Technologies Inc. Spec Seal Putty / Rectorseal Metacaulk

**HILTI INC — CP 618**

**RECTORSEAL- FSP 1000 Putty. F rating is 2 HR when this material is used. STI-SSP series**

\* Bearing the UL Classification Mark

---

## Design/System/Construction/Assembly Usage Disclaimer

- Authorities Having Jurisdiction should be consulted in all cases as to the particular requirements covering the installation and use of UL Listed or Classified products, equipment, system, devices, and materials.
- Authorities Having Jurisdiction should be consulted before construction.
- Fire resistance assemblies and products are developed by the design submitter and have been investigated by UL for compliance with applicable requirements. The published information cannot always address every construction nuance encountered in the field.
- When field issues arise, it is recommended the first contact for assistance be the technical service staff provided by the product manufacturer noted for the design. Users of fire resistance assemblies are advised to consult the general Guide Information for each product category and each group of assemblies. The Guide Information includes specifics concerning alternate materials and alternate methods of construction.
- Only Products which bear UL's Mark are considered as Classified, Listed, or Recognized.

---

Reprinted from the UL Online Certification Directory with permission from Underwriters Laboratories Inc.

Copyright © 2011 Underwriters Laboratories Inc. ®

Last Update: 2011-06-22